

Olympus MicroFire™

2 Megapixel Color Digital Camera

- Video-rate color imaging
- FireWire™ for rapid data transfer
- 12-bit image file depth
- Fast live color binning
- Full screen live viewing
- Film-strip image buffer
- Advanced image processing tools
- Easy to install and use!



OLYMPUS
A M E R I C A

MicroFire

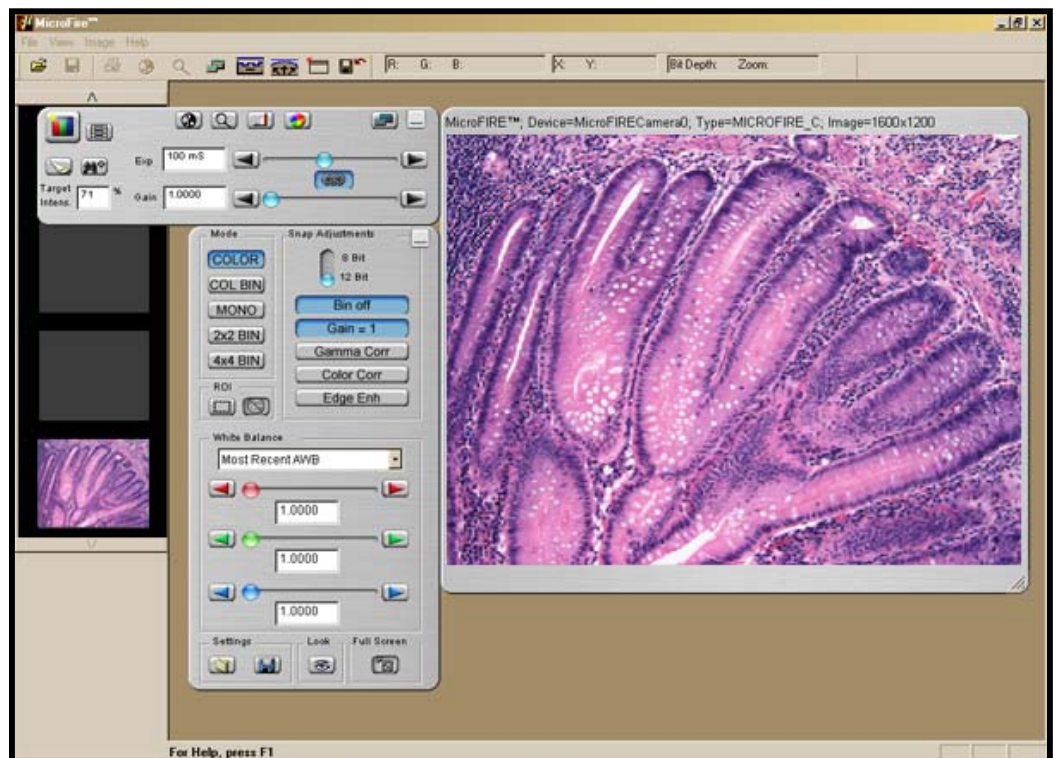
Satisfying Rigid Demands in Digital Imaging

The MicroFire™, a 2 Megapixel FireWire™ digital color camera, acquires images with superb color fidelity and detail. With its high sensitivity, resolution, and dynamic range, this versatile camera is ideal for a broad range of microscopy applications. The MicroFire™ offers several solutions for fluorescence imaging when image signals are weak. Users have the option to boost the image intensity and reduce the exposure time by using one of the binning options, increasing the gain, or a combination of both! With all these outstanding features, the MicroFire™ offers the ultimate in technology for scientific documentation.

Complete with easy-to-use software

The intuitive software sports a newly designed graphic user interface and provides easy one-click access to all of the camera controls.

The image storage buffer facilitates image viewing after acquisition. The software includes advanced image processing tools including image processing capabilities.



MicroFire™ Specifications



CCD Array:	1600 x 1200 Pixels
CCD Size:	14.8mm diagonal (2/3" format)
Pixel Size:	7.4 microns square
Architecture:	Interline CCD, Progressive scan (non-interlaced)
Well Depth:	40,000 electrons
Read Noise:	40 electrons rms
Dark Current:	0.3 nA/cm ²
Dynamic Range:	60 dB
Hardware Interface:	IEEE 1394 (FireWire™), 6 pin
Software Interface:	Olympus Proprietary, SDK Available
Binning Modes:	1X1 (1600 X 1200) 2X2 (800 X 600) Monochrome only 3X3 (512 X 400) Color only 4X4 (400 X 300) Monochrome only
Subframing modes:	User-defined # of lines, in multiples of 2 Range: 100 lines - 1200 lines
Frame Rates (max):	10 FPS @ 1600 x 1200 18 FPS @ 800 x 600 (2x2 binning) 24 FPS @ 512 x 400 (3x3 binning) 30 FPS @ 400 x 300 (4x4 binning) 48 FPS @ 1600 X 100 (subframed mode)
Exposure Time Range:	500 microseconds - 60 seconds
Gain Range:	1x - 16x
Bit Depth:	36-bit Color (24-bit selectable)
Optical Interface:	C-mount (1-32 thread), 17.5mm backfocus
Computer Recommendations:	1GHz or better PC, Windows 98 SE/ME/2000/XP 1600 x 1200, 32-bit color video 512 MB RAM

Olympus America, Inc.
Scientific Equipment Group
2 Corporate Center Drive
Melville, NY 1174

1-800-446-5967 or 1-631-844-5000
email: micro@olympus.com
www.olympusamerica.com